



## TAMPINES PRIMARY SCHOOL

250, Tampines Street 12, Singapore 529426

(Tel) 67831190, (Fax) 67843521, <http://www.tampinespri.moe.edu.sg>

*A Community School of Excellence: Care Create Connect Contribute*

TPPS/31/2026

29 June 2026

Dear Parents/Guardians,

Welcome back to school! Term 3 promises to be an engaging term for all students. As we continue to enhance our school programmes to provide the unique Tampinesian brand of education, we continue to “Know Every Child, Grow Every Child and Celebrate Every Child”.

With the belief that it takes a village to raise a child, we will also continue to engage stakeholders at our annual In-Conversation with Stakeholder (ICS) event at the end of the year. Details of this event will be issued to invited stakeholders.

### **2026 P1 Registration Exercise - Phase 1 Registration**

Phase 1 registration is for a Singapore Citizen (SC) or Permanent Resident (PR) child born between 2 January 2020 and 1 January 2021 (both dates inclusive) and has a sibling currently studying in our school.

For the 2026 P1 Registration Exercise, parents who are registering your younger child under Phase 1 are to **register during the Phase 1 registration period from 30 Jun, 9am to 2 July, 4.30pm** through the P1 Registration Portal.

You may refer to MOE P1 website for information on the 2026 P1 Ex:

<https://www.moe.gov.sg/primary/p1-registration>

### **P5 NE Show – Saturday, 18 July 2026**

Our P5 students have an exciting experience to look forward to — the National Education (NE) Show on Saturday, 18 July 2026, held at the National Stadium. Since 1997, the NE Show has been organised to instil a sense of patriotism in students and to highlight the significance of Singapore's National Day. It remains a meaningful platform for students to experience and understand National Education values.

Detailed information on reporting arrangements, attire, items to bring, and meal arrangements has been issued to parents of P5 students via Parents Gateway (PG) on 22 June 2026. Parents are reminded to acknowledge the letter and indicate vegetarian meal preference by **29 June 2026**. For clarifications, please contact your child's form teacher or reach our NE Coordinator, Ms Queenie, at [low\\_jia\\_ling\\_queenie@moe.edu.sg](mailto:low_jia_ling_queenie@moe.edu.sg).



### PSLE and Home-Based Learning (HBL)

Please note the days that your children do not need to report to school during the PSLE Oral, Listening and Written Examination. More details will be provided in due course.

PSLE	Date	Levels Reporting to school
PSLE Oral Examination	Wed 12 – Thu 13 Aug	<b>Only P6 Students</b> P1 to P5 will not report
Listening Comprehension	Tue 15 Sep	<b>Only P6 Students</b> P1 to P5 will not report
PSLE Written Examination	Thu 24 Sep	<b>All levels</b>
	Fri 25 Sep	<b>P1, P2, P4, P5 and P6</b> P3 will not report
	Mon 28 Sep	<b>P1, P2, P3, P5 and P6</b> P4 will not report
	Tue 29 Sep	<b>All levels</b>
	Wed 30 Sep	<b>P1 – P5, P6 HMT students</b> P6 non-HMT will not report
PSLE Marking Exercise	Mon 12 – Wed 14 Oct	<b>Only participating P3 Students in the SwimSafer Programme and all P5 students.</b>  P1, P2, P4 and P6 will not report

P6 Students will have a three-day Study Break from Mon 21 – Wed 23 Sep immediately before the PSLE written examinations.

The 2026 PSLE Examination Calendar can be found at the following website: <https://file.go.gov.sg/2026-psle-exam-cal.pdf>

### Anti-bullying Policy

We would like to draw your attention to the enclosed Anti-Bullying Policy (Annex A), which outlines our school's commitment to providing a safe and supportive environment for every student. We encourage you to read through the policy and discuss it with your child, as we believe that tackling bullying effectively requires a partnership between school and home. If you have any questions or concerns about the policy, or if your child has experienced or witnessed bullying, please do not hesitate to reach out to your child's form teacher or the school office.

### Beverage Container Return Scheme (BCRS)

With effect from Term 3, the school will be implementing the national Beverage Container Return Scheme (BCRS) at our canteen. Under this scheme, selected canned and bottled beverages carry a 10-cent refundable deposit, which will be added to the purchase price. Students purchasing these beverages will be advised not to crush the empty cans or bottles. Instead, they should return the empty and rinsed containers to the drink stall, where they will receive a 10-cent refund for each eligible container returned. This initiative supports Singapore's efforts to reduce waste and promote recycling. We seek your partnership in encouraging your child to participate responsibly by returning eligible beverage containers, thereby cultivating environmentally responsible habits and contributing to a cleaner and greener Singapore.



## Email Scam Targeting Microsoft Accounts

Please alert your children about this new scam called Kali365 and remind them to stay vigilant against such cyber-attacks.

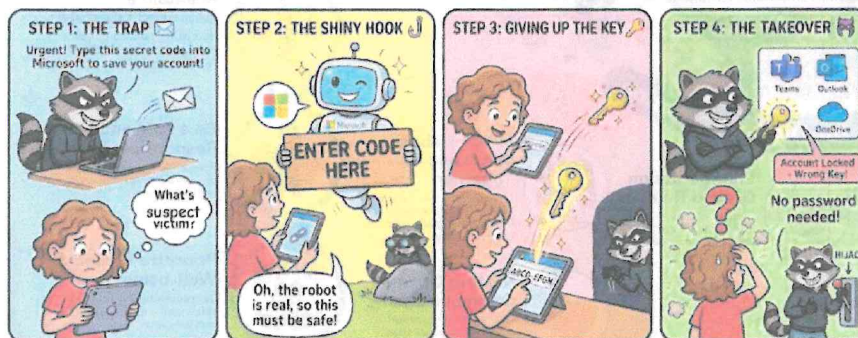


## Important Notice:

New Email Scam Targeting Microsoft Accounts

The FBI has issued a warning about a new scam called **Kali365**. It can take over your Microsoft account (**Outlook, Teams, OneDrive**) without ever stealing your password.

## No-Password Cyber Attacks



**REMEMBER: If you didn't ask for a code, don't type a code!**  
Feel free to reach out if you have any questions. The IT Team

### How it works:

1. You receive an email containing a sign-in "code".
2. The email asks you to enter this code on a genuine Microsoft sign-in page.
3. As soon as you do, the attacker gains full access to your account.



**There is no fake website or misspelled link to spot, which makes this scam difficult to detect.**



### What you should do:

1. If you receive a code, you did not request, **do not enter it**. Delete the email.
2. Only enter a code if you personally started the sign-in process.
3. If anything seems unusual, please check before clicking.

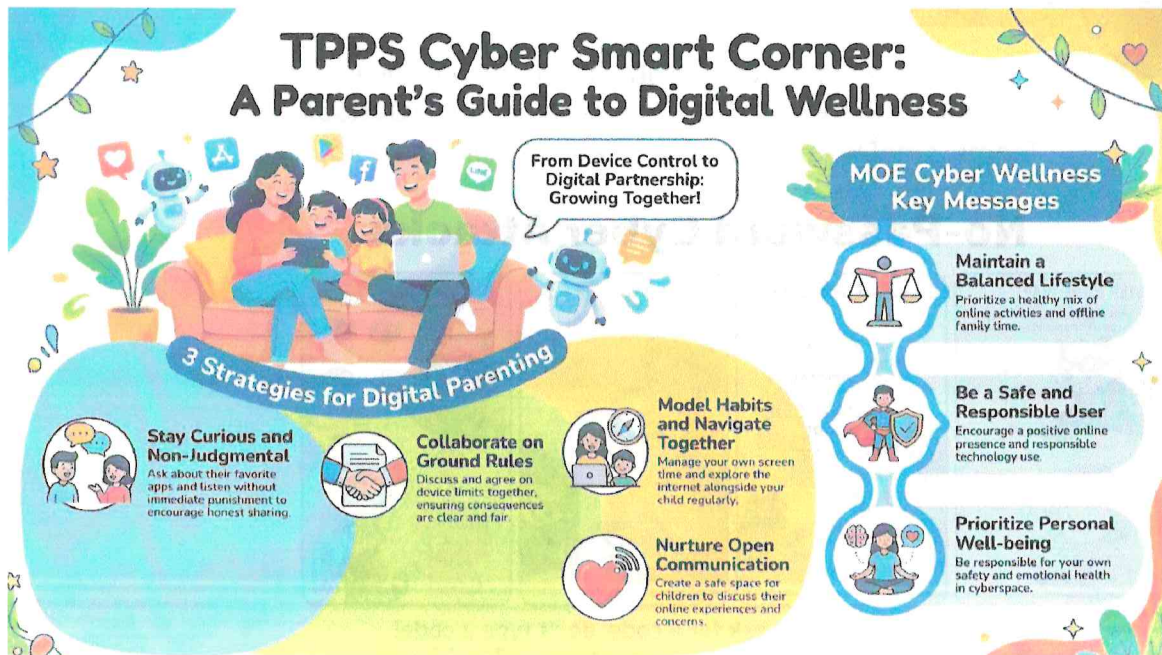
**Thank you for staying alert.**

Digital Excellence & Products Division (DXD)

Questions or feedback? Write to us at [MOE\\_IT\\_SECURITY@moe.gov.sg](mailto:MOE_IT_SECURITY@moe.gov.sg)

## TPPS Cyber Smart Corner

This month's TPPS Cyber Smart Corner focuses on the important role parents play in nurturing their children's digital wellness. Parents are encouraged to stay curious about their children's online activities, establish clear and agreed-upon digital boundaries, and model healthy technology habits. Open and non-judgemental conversations can help children feel safe sharing their online experiences and seeking support when needed. Together, we can foster a balanced lifestyle and develop responsible digital citizens.



## Important Reminders

To ensure a safe and happy school for all our students and staff, we gently remind parents that students should not come to school if they are sick or unwell with flu-like symptoms. As part of our social responsibility, you are strongly encouraged to only let your child return to school after the medical leave is completed, and when your child is well. Staff will be carrying out their daily visual wellbeing checks on all students. We will continue to encourage all students to practise personal hygiene by washing their hands frequently, wearing masks if necessary, doing the daily wipe-downs and informing the teachers if they feel unwell.

## Conclusion

We recognise the challenges of parenting in the digital age and are committed to supporting parents to build healthy habits in children that will continue through into adulthood.

We would like to provide you with a toolbox of practical tips for you to support your child's well-being and navigate parenting in this digital age. You may access the resources at this website:

[Parenting For Wellness | Home](#)

Please also find attached 2026 Semester 2 School Calendar (Annex B) for your reference and planning. Our teachers will be sending details of other cohort and specific programmes via PG for your information and follow-up.

We look forward to your continued warm and active partnership to help know, grow and celebrate every Tampinesian.

Yours in partnership,

  
Mr Hanafi Asmore  
Principal

## Anti-Bullying Policy

### Our Commitment

At Tampines Primary School, we believe every child deserves to feel safe, valued, competent and empowered in their learning journey. We are committed to creating a safe, caring and enabling school environment where all students can flourish and develop positive relationships with their peers.

Our approach focuses on teaching kindness, empathy, and respect whilst addressing any hurtful behaviour that may arise. We work together as a school community – staff, students, and parents – to ensure everyone feels they belong.

### What is Bullying?

Bullying involves persistent and intentional hurtful acts, while other hurtful behaviours include once-off insensitive comments and physical fights.

Bullying and hurtful behaviours can take various forms, including verbal, social, physical and cyber:

- Verbal: Name-calling, spreading rumours, or making threats
- Social exclusion: Deliberately leaving someone out, or encouraging others to ignore someone
- Physical actions: Pushing, hitting, or damaging someone's belongings
- Cyber bullying: Using online technology like phones, computers, or social media to hurt or embarrass others on purpose and repeatedly

### The school's firm stance against hurtful behaviours

The school takes a firm stance against all forms of hurtful behaviours, from once-off, insensitive comments to persistent intentional acts of bullying and physical violence. This stance guides our school in managing different forms of hurtful behaviours.

We recognise that children may have disagreements or say things they do not mean. We help students understand the difference between occasional conflicts (which are part and parcel of socialization) and persistent bullying behaviour, addressing each situation with care and appropriate support.

### How We Prevent Incidents

- Take a firm stance against hurtful behaviours and bullying
- Foster a caring and enabling school environment, with positive teacher-student relationships and strong peer support structure with trained student leaders
- Conduct Character & Citizenship Education lessons on empathy, conflict management, resilience and cyber wellness
- Have regular communications with staff and students

### How to Report Concerns

We want parents and students to feel comfortable coming to us with any concerns. You can reach out to us in several ways:

- Direct reporting to any staff member
- Online confidential reporting form
- Parent contact with teachers/school leaders

### How We Respond

- Immediate physical and psychological safety measures for all students involved
- Prompt investigation and timely updates, subject to case complexity
- Consequences, including disciplinary actions, conduct grade adjustments, learning prosocial skills and reconciliation of relationships
- Support plans for affected students, including victims and offender

- **Restorative support** including school counselling, external referrals and leveraging community resources
- **Partnership with parents** throughout the process, including informing parents at the earliest opportunity

### How Parents Can Support

- **Talk regularly** with your child about school experiences and friendships
- **Teach respectful behaviour** and reinforce healthy digital habits at home
- **Monitor** your child's online and offline interactions and activities
- **Share concerns promptly** with your child's Form Teacher or Year Head
- **Work collaboratively** with school on agreed interventions
- **Model positive behaviour** in your own interactions, such as being calm and respectful in communications
- **Use 'teachable moments'** in your daily interactions with your child to explain why certain conduct is inappropriate

### Get in Touch

We are here to listen and help. If you would like to bring an incident to our attention, you can reach out to us via any of the following methods:

- Inform Form Teacher, Discipline Master, Year Head or School Leaders
- Call: 67831190
- Email: [tpps@moe.edu.sg](mailto:tpps@moe.edu.sg)
- [Non-urgent cases only] Online reporting form: <http://go.gov.sg/tppsreport>

We review this policy regularly to make sure it continues to serve our school community well. Together, as a school community, we shape our students' character, strengthen relationships, and build caring communities.

## Annex B

### 2026 Semester 2 School Calendar

Date	Events	Remarks
Tue 30 Jun – Thu 2 Jul	P1 Registration Exercise Phase 1	
<b>Mon 6 Jul</b>	<b>Youth Day School Holiday</b>	<b>No School</b>
Wed 8 – Sat 11 Jul	Thailand Overseas Trip	P5 Selected Students
Thu 9 – Fri 10 Jul	P1 Registration Exercise Phase 2A	
Sat 18 Jul	National Education (NE) Show	Only P5 Students
Mon 20 – Tue 21 Jul	P1 Registration Exercise Phase 2B	
Wed 22 – Sat 25 Jul	Indonesia Overseas Trip	P5 Selected Students
Tue 28 – Wed 29 Jul	P6 Prelims Oral	After school
Tue 28 – Thu 30 Jul	P1 Registration Exercise Phase 2C	
<b>Fri 7 Aug</b>	<b>National Day Celebrations</b>	<b>School Dismissal at 10.30am</b>
<b>Mon 10 Aug</b>	<b>National Day Holiday in Lieu</b>	<b>No School</b>
<b>Wed 12 – Thu 13 Aug</b>	<b>PSLE Oral</b>	<b>No School Except for P6 Students</b>
Fri 14 Aug	P6 Prelims LC (EL & MTL)	P6 Students
	P5 HMT WA	P5 HMT Students
Mon 17 – Tue 18 Aug	P1 Registration Exercise Phase 2C Supplementary	
Mon 17 – Fri 28 Aug	Weighted Assessment (P3, P4, P5)	Details to be provided closer to date
Thu 20 – Wed 26 Aug	P6 Prelims Exams	Details to be provided closer to date <b>P6 students will be dismissed at 12.30pm on Thu 20 - Tue 25 Aug;</b> <b>Normal school day for P6 students on Wed 26 Aug</b>
Wed 26 Aug	GEP Screening Exercise	For P3 Students
<b>Thu 3 Sep</b>	<b>Teacher's Day Celebrations</b>	<b>School Dismissal at 10.30am</b>
<b>Fri 4 Sep</b>	<b>Teachers Day School Holiday</b>	<b>No School</b>
<b>Sat 5 Sep – Sun 13 Sep</b>	<b>Term 3 September School Holidays</b>	<b>No School with exceptions</b>
Thu 10 – Fri 11 Sep	P6 Booster Camp	P6 Students
<b>Tue 15 Sep</b>	<b>PSLE LC</b>	<b>No School Except for P6 Students</b>
Mon 21 – Wed 23 Sep	P6 Study Break	No School for P6 Students only
Thu 24 Sep	PSLE Written Exams	<b>All levels report to school</b>
Fri 25 Sep	PSLE Written Exams	<b>P1, P2, P4, P5 and P6 report to school</b> P3 will not report
Mon 28 Sep	PSLE Written Exams	<b>P1, P2, P3, P5 and P6 report to school</b> P4 will not report
Tue 29 Sep	PSLE Written Exams	<b>All levels report to school</b>
Wed 30 Sep	PSLE Written Exams	<b>P1 – P5, P6 HMT students report to school</b> P6 non-HMT will not report
<b>Thu 1 Oct</b>	<b>Children's Day Celebrations</b>	<b>School Dismissal at 10.30am</b>
<b>Fri 2 Oct</b>	<b>Children's Day School Holiday</b>	<b>No School</b>
Mon 5 Oct	End of Year EL / FEL & MTL / FMTL Paper 1 (P3, P4, P5)	Details to be provided

<b>Date</b>	<b>Events</b>	<b>Remarks</b>
Tue 6 Oct	End of Year LC Exams (P3, P4, P5)	Details to be provided
Thu 8 – Fri 9 Oct, Thu 15 Oct	End of Year Oral Exams (P3, P4, P5)	After School. Details to be provided
Mon 12 – Wed 14 Oct	PSLE Marking	No School with exceptions for P5 and P3 Swimsafer Prog (Only for participants) Details to be provided
Thu 22 – Wed 28 Oct	End of Year Written Exams (P3, P4, P5)	Details to be provided <b>P1-P6 students will be dismissed at 12.30pm on Thu 22 - Tue 27 Oct;</b> <b>Normal school day for P1-P6 students on Wed 28 Oct</b>
Fri 30 Oct	MK@Tampines K1 2027 Orientation	
Sat 31 Oct	In-Conversation with Stakeholders	Invited Attendees
<b>Mon 9 Nov</b>	<b>Deepavali Public Holiday</b>	<b>No School</b>
<b>Fri 13 Nov</b>	<b>Admin Day, P1 Orientation</b>	<b>No School</b>
Thu 19 Nov	P6 Graduation Day	
<b>Fri 20 Nov</b>	<b>Excellence Day</b>	<b>No School with exceptions</b>
<b>Sat 21 Nov - Thu 31 Dec</b>	<b>School Holiday</b>	<b>No School</b>

